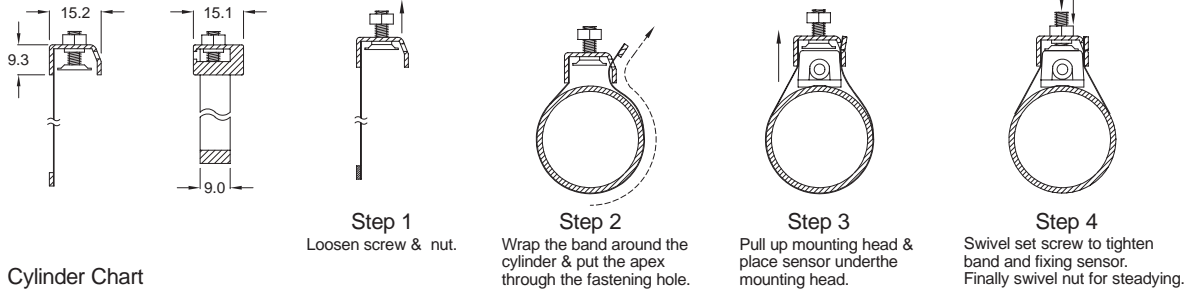


CLAMP PN/PH/PAB SERIES

Magnetic Sensor

PN

Clamp is designed for mounting CS-21 & CS-31 series sensor on round cylinder.



Cylinder Chart

Model	Bore Size	Barrel Material	Model	Bore Size	Barrel Material
PN-A16	Ø16	Aluminum	PN-S10	Ø10	Stainless
PN-A20	Ø20	Aluminum	PN-S12	Ø12	Stainless
PN-A25	Ø25	Aluminum	PN-S16	Ø16	Stainless
PN-A30	Ø30	Aluminum	PN-S20	Ø20	Stainless
PN-A32	Ø32	Aluminum	PN-S25	Ø25	Stainless
PN-A40	Ø40	Aluminum	PN-S32	Ø32	Stainless
PN-A50	Ø50	Aluminum	PN-S40	Ø40	Stainless
PN-A63	Ø63	Aluminum			

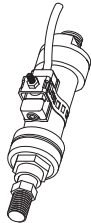
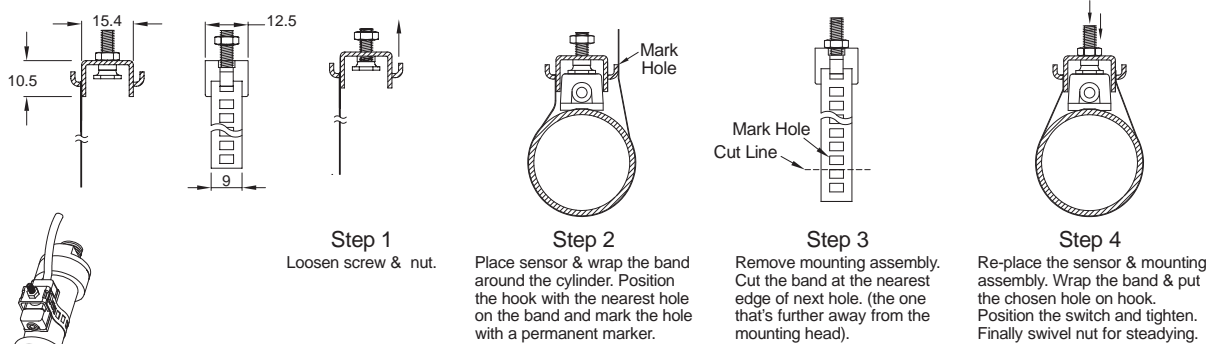


PN - S 2 0

— Cylinder bore size.
S : For cylinder body is stainless steel.
A : For cylinder body is aluminium steel.

PH

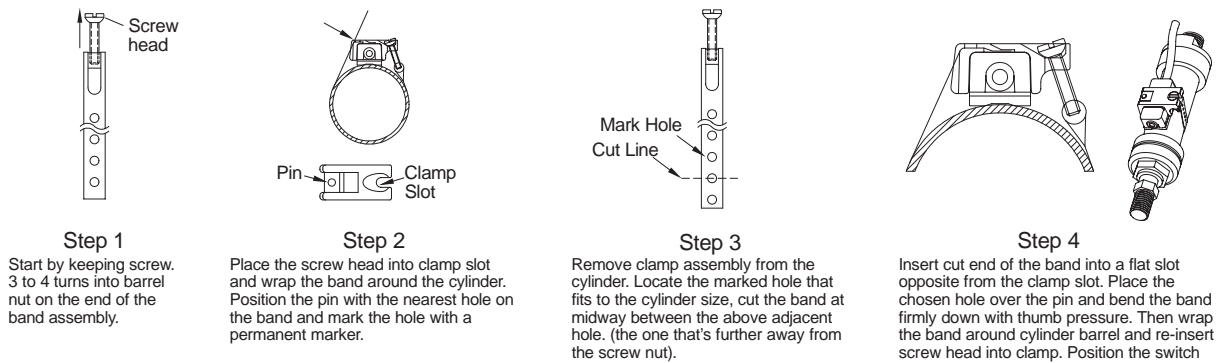
Clamp is designed for mounting CS-21 & CS-31 series sensor on round cylinder.



PH-1 : For Ø6 ~ Ø63 round cylinder use.
PH-2 : For Ø6 ~ Ø125 round cylinder use.

PAB

Clamp is designed for mounting CS-21 & CS-31 series sensor Ø12 ~ Ø100 on round cylinder.



PAB : For Ø12 ~ Ø100 round cylinder use.